



Women's Health
in Women's Hands
Annual Report
2006-2007



The mandate of Women's Health in Women's Hands [WHIWH] Community Health Centre is to provide community, mental and clinical health promotion support to Black Women and Women of Colour from the Caribbean, African, Latin American and South Asian communities in Metropolitan Toronto and surrounding municipalities. We are committed to working from an inclusive feminist, pro-choice, anti-racist, anti-oppression, and multilingual participatory framework in addressing the issue of access to healthcare for our mandated priority populations encompassing gender, race, class, violence, sexual orientation, religion, culture, language, disability, immigration status and socio-economic circumstances.

Message from the Board Chair: Ayshia Musleh



It seems like only yesterday that I became a member of the Board at Women's Health in Women's Hands CHC. However this year sadly marks my sixth and final year serving the Centre, first as the Chair of WHIWH's Policy and Review Committee then subsequently as Chair of the Board. It is not easy saying goodbye to a place where I have spread my wings, but this sadness is easily giving way to pride. WHIWH

has been a place I have readily called home over time, for it has stayed aligned with my principles, as a community centre which not only serves the needs of Black Women and Women of Colour but one that is committed to promoting the voice of ethno-racial people of all abilities.

There is no question that I am very pleased with what we have accomplished together. Our history has seen the centre not only climb into a leadership position but maintain itself as an instrumental institution in the health of black women and women of color. From the groundbreaking work in research to the unified strength in advocacy, it is impossible to mention the centre without that look of recognition everywhere. And while I am honoured that I have been a part of the success, I am very aware that this could not have happened without the help and support of so many of you and of the strong, dedicated, hardworking staff and board at WHIWH.

I want to thank the management team and staff for their support of the Board and wish them well in their sometimes thankless efforts to simply do their jobs.

And while I say goodbye as Chair of the Board it is not from a distance for my heart will always be here.

Message from the Executive Director: Notisha Massaquoi



2007 has been an extraordinary year for all of us at Women's Health in Women's Hands CHC. As we move into our 18th year in operation, we continue to exemplify our mandate of increasing access to primary healthcare for Black women and women of color from an anti-oppressive framework. This is a lofty task but we continue moving in the direction we have set out for ourselves. Our commitment to being on the front lines as a health care centre designed to provide exemplary care for Black Women and Women of Color is a deep rooted focus for all of us at WHIWH. Through our unremitting dedication to serving women of African, Caribbean, Latin American and South Asian origin we have been recognized not only by our provincial

government through increased core funding but most importantly by the communities we serve. This year WHIWH received additional funding for initiatives that will address chronic illnesses such as Diabetes and HIV/AIDS. Furthermore as part of this year's legacy we were awarded designation as an anonymous HIV testing site which will enhance our clinical services as we continue to be a leader in the treatment, support, care and research in the area of Women and HIV/AIDS.

From the development of our awareness campaigns on diabetes and anonymous HIV testing, to our unique research on the healthcare needs of Black women and women of color to producing the first documentary film on Black women living with HIV/AIDS in Canada you can see our centre has been involved in some very dynamic initiatives and programs this year. However none of this could have been possible without the support of the many individuals who make up WHIWH. I would like to express my gratitude for the commitment, compassion and personal integrity of our staff and board who, year after year, make the services at WHIWH possible. Their willingness and continued dedication is a true testament of heart and perseverance.

As we welcome 2008, we will continue to stand by our commitments and initiatives to the women we serve, and we look forward to flourishing as a centre devoted to excellence. We will continue to be a centre where the lives of Black women and women of color matter.

Meet our new WHIWH MANAGERS



Lori-Ann Green Walker – Clinical Services Manager

Lori-Ann Green-Walker joined WHIWH in June, 2007. Lori-Ann has been working in the health care sector for the past 8 years, most recently as a manager within the New York City Public Health Network serving a similar mandated community as WHIWH. During her career she led multidisciplinary teams while identifying best practices for improving quality and health care outcomes.



Laurel Service – Administrative Manager

Laurel Service joined WHIWH as Administrative Manager in September 2007. Her previous experience includes Office Manager for the Association of Ontario Health Centres (AOHC), and Executive Special Assistant to the Minister of Education, Youth and Culture in Jamaica.



Linda Cornwell – Program and Communications Manager

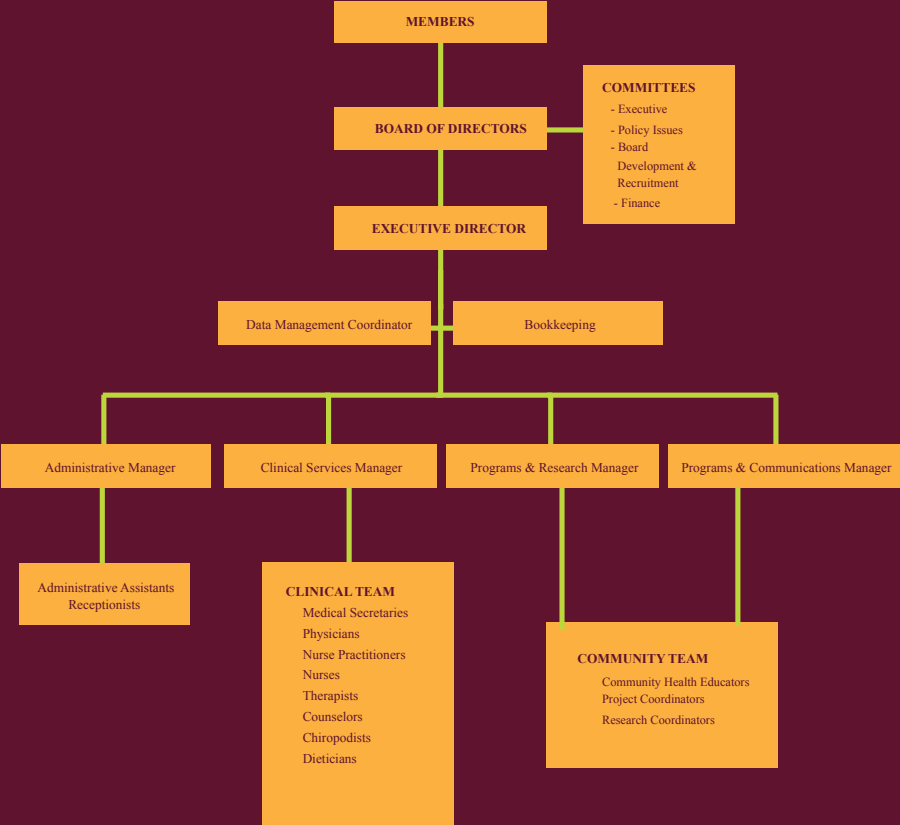
Linda has been working at WHIWH since 1993. She has worked extensively with ethno-racial women with disabilities and with older women in her capacity at the health centre. Linda has been involved in many community initiatives and research projects on women's health issues facing women of color.



Wangari Esther Tharao – Program and Research Manager

Wangari's expertise is in the area of research and community development in HIV/AIDS, FGM and other health issues affecting black women and women of colour and has been working at WHIWH since 1999. She has served on numerous working groups/advisory committees at the local, national and international level and is co-chair of the African and Caribbean Council on HIV/AIDS in Ontario.

Our new WHIWH ORGANIZATION CHART



THE
WOMAN
I HAVE
BECOME



LIGHTS, CAMERA, KNOWLEDGE!

Pre-screening of The Woman I Have Become

On December 1st 2007, in recognition of World AIDS Day, Women's Health in Women's Hands CHC in collaboration with the African and Caribbean Council on HIV/AIDS in Ontario (ACCHO) hosted a pre-release screening of the documentary, The Woman I Have Become: African and Caribbean Women Living with HIV/AIDS in Canada . This film was produced by WHIWH in collaboration with VOICES of Positive Women, Black Coalition for AIDS Prevention (Black CAP), Africans in Partnership Against AIDS (APAA), African Community Health Services (ACHES).

Screened at The Bloor Cinema, this poignant documentary followed the lives of several HIV positive African and Caribbean women who reside in Toronto. Directed by award winning film maker Alison Duke, the production highlighted the challenges and successes these women faced while navigating multiple systems, such as dealing with family, service providers as well as society at large.

The film was overwhelmingly well received by a near full house , including the Minister of Health and Long Term Care for Ontario and press from CBC Radio, Canada Extra and Share, The screening was followed by an open moderation session conducted by Dr. Rita Deverell with the women featured in the film. The Woman I Have Become will be an instrumental educational tool for community members and health care providers .



Photographs courtesy of The Gleaner Company (Canada) Ltd.



**KNOW
YOUR
HIV
STATUS
Get Tested**

NEW PROGRAMS

Diabetes Education Centre

Diabetes is a chronic illness that affects more than 800,000 people in Ontario. Individuals of Caribbean, African, Latin American and South Asian descent have higher prevalence rates and are more likely to develop the disease than the general population. If left untreated or improperly managed, diabetes can result in a variety of complications, including heart disease, kidney disease, eye disease, impotence and nerve damage. Considering the explosive impact this disease has on the population we serve WHIWH will be addressing diabetes prevention as a priority issue. WHIWH was awarded \$284,859 this year from the Ministry of Health and Long Term Care for 2 diabetes education teams consisting of registered nurses and registered dietitians. The teams will provide education, early intervention and effective prevention of diabetes-related complications specific to Black women and women of color. WHIWH was one of the 44 teams in the province which were selected by the MOHLTC for this program.

Anonymous and Point of Care HIV Testing

WHIWH has been designated as one of the 50 HIV Anonymous testing sites across Ontario. At an anonymous site, individuals can be tested without having to provide any information that will reveal their identity. In addition to anonymous testing, WHIWH will be able to provide Point of Care (POC) Testing. This free reliable HIV test can determine whether an individual is HIV positive within 60 seconds. This new process takes about 20 minutes including pre-test counseling, test administration, and post-test counseling and is considerably faster than traditional HIV testing which takes two weeks to receive results.

New Research:

“Involving Ontario HIV-Positive Women and Their Providers in Determining Their Research Needs and Priorities”

WHIWH in partnership with Women’s College Hospital and Dr. Mona Loufty has been awarded a Canadian Institutes of Health Research Grant for \$158,536. The research project which aims to determine what research topics interest Ontario women living with HIV/AIDS and their providers will take place over two years and will set the research agenda for HIV positive women in Canada. Their input will help to ensure that HIV research is recognized as research for the community and not on the community. Our grant application was ranked #1 for the HIV/AIDS Community Based Research stream of CIHR.



STAFF, BOARD AND STUDENT PLACEMENTS

WHIWH Staff

Jewel Bailey
Shabari Banerji
Soma Chatterjee
Shirley Cheung
Linda Cornwell
Deone Curling
Helen Gateri
Lori-Ann Green-Walker
Rosa Maria Flores
Nalya Jessamy
Ishara Jeyachandran
Sharon Khoo
Anu Lala
Claire Langevine
Carolina Luengo
Raymond Lui
Grace Makhurane
Latoya Maloney
Notisha Massaquoi
Vivia McCalla
Andrena Mookram
Marvelous Muchenje
Vivian Ngirimo
Lillian Ochere
Temi Onabote
Tara Pouyat
Kamila Premji
Sandra Romain
Claudia Samayoa
Megan Saunders
Laurel Service
Yogeeta Sharma

Wangari Tharao
Cindy Tsai
Mercedes Umaña

Student Placements and Summer Students

Fatemeh Darkashloo
Simone Donaldson
Maxine Fung
Maria Garrick
Rachel Larivée
Hibak Mahamed
Kendra Mills
Agnes Murororukwere
Karen Naidoo
Vernée Samuel
Memuna Stevens

WHIWH Board Of Directors

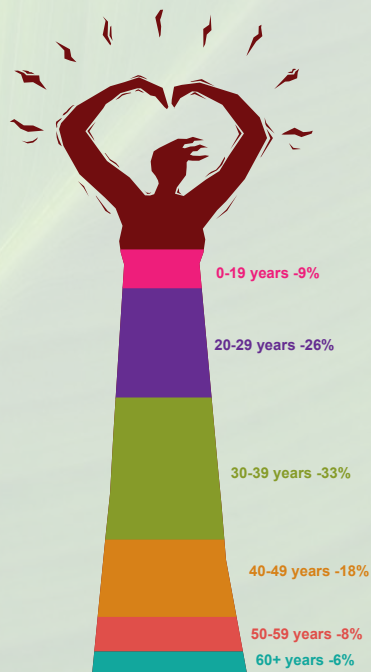
Ayshia Musleh – Chair
Cheryl Henry – Vice Chair
Rumana Chowdhury – Treasurer
Sharon Njobo – Secretary
Natasha Williams – Board Policy Committee Chair
Fouzia Warsame – Board Recruitment and Development
Committee Chair
Archana Mary Mathew
Letticia Adinkrah
Sol Redondo

WHO VISITED THIS YEAR

A total of 3124 clients visited WHIWH this year



Active Clients Distribution by Ethnic Group as of November 5, 2007.
These categories are based on our clients' self identification



Active Clients Distribution by Age Group as of November 5, 2007

FINANCIAL STATEMENT

Women's Health In Women's Hands statement of Revenue and Expenses for The Year ended March 31, 2007 (With Comparative Figures For 2006)

Revenue	2007	2006
Ministry of Health	\$ 2,558,003	\$ 2,336,865
Ministry of Health - non-recurring item funding	192,765	232,244
Grant income	526,209	221,803
Miscellaneous income	-	1,276
Interest	7372	167
	3,284,349	2,792,355
Expenses		
Salaries and contract services, benefits, <i>Note 6</i>	1,697,283	1,484,668
Grant expenses	526,209	221,803
Rent and property taxes	356,565	303,817
Non-recurring item expenses	186,619	202,769
Non insured medical expenses	146,709	139,900
Purchased services and resource materials	118,502	69,154
Early years program expenses	54,035	62,963
Legal and audit fees	34,096	26,401
Computer expenses	32,767	24,717
Telephone	23,644	23,937
Membership and dues	17,220	14,674
Consultants fees	11,895	10,802
Travel and transportation	9,750	13,548
Printing	8,981	5,124
Medical supplies	8,842	9,083
Board expenses	8,610	8,202
Interest and bank charges	5,591	1,016
Office equipment	5,458	2,269
Insurance	4,973	9,509
Recruitment	4,563	677
Staff development	4,442	18,786
Office and supplies	4,106	105
Maintenance and repairs	3,938	5,448
Meeting expenses	2,812	7,904
Postage and courier	2,522	3,166
Resource materials and promotion	1,276	4,788
	3,281,408	2,675,230
Excess Of Revenue Over Expenses	2,941	117,125
Reduction In Min. Of Health Funding	(2,081)	(10,044)
Due To The Ministry Of Health, <i>Note 5</i>	860	107,081

The 2007 Financial Audited statement was approved on September 28th, 2007 at the special members meeting. Full reports are available upon request.

COMMUNITY PARTNERS AND FUNDERS

Community Partners

African and Caribbean Council on HIV/AIDS in Ontario; African Community Health Services; Africans in Partnership Against AIDS; AIDS Bureau, Ontario Ministry of Health; Black Coalition for AIDS Prevention; Centre francophone de Toronto; Ethno Racial People with Disabilities Coalition of Ontario; Jamestown Women and Children Services; Mount Sinai Hospital; Ontario Women's Health Network; Ryerson University. School of Social Work; Sistering; South Riverdale Community Health Services; St. Joseph's Hospital; St. Michael's Hospital; The Chang School, Ryerson University; The Daily Bread Food Bank; Tretheway Community on the Move Program; THRIVE: The Multicultural Women's Coalition Against Violence and Oppression; U-MOVE – United Mothers Opposed to Violence Everywhere; University of Toronto, Faculty of Social Work; University of Toronto, Faculty of Nursing; Voices of Positive Women; Women's College Hospital; Women's College Research Institute.

List of Funders

Women's Health in Women's Hands expresses gratitude to our funder, the Local Integrated Health Network (LIHN).

We are also grateful for the funding provided by Human Resources and Skills Development Canada, City of Toronto AIDS Prevention Investment Program, Canadian Institutes of Health Research, AIDS Bureau, Ontario Diabetes Program and Early Years Program of Ministry of Health and Long Term Care, Ontario Trillium Foundation, MAC AIDS Fund, and the Public Health Agency of Canada.

WHIWH location and contact information

Address

2 Carlton Street, Suite 500
Toronto, Ontario. M5B 1J3

Contact Information

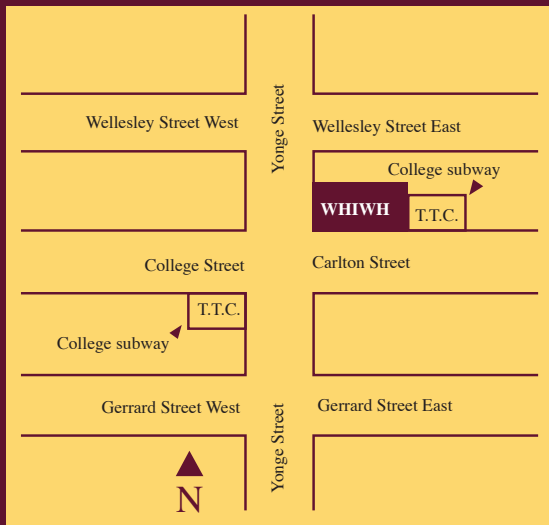
Tel: (416) 593-7655
Fax: (416) 593-5867
TTY: (416) 593-5835
E-mail: whiwh@web.net
www.whiwh.com

Opening Hours

Mon, Tues, Thur:
9:00 am to 8:00 pm

Wed, Fri:
9:00 am to 5:00 pm

3rd Sat. of the Month:
10:00am to 4:00 pm



Writing/Editing:
Nicole Curling

Graphic Design:
Frantz Brent -Harris
www.frantzbretharris.com

